

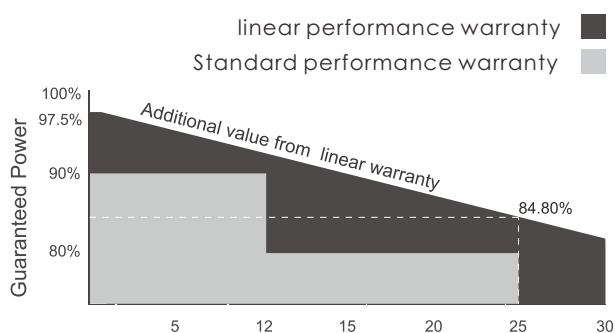
Monocrystalline Solar PV Modules

530-555 Watt 10BB



Linear Performance Warranty

12 Years Product Warranty 30 Years Linear Power Warranty

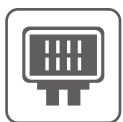


Certification

- IEC 61215, IEC 61730, CE, CQC
- ISO9001: 2015: Quality management system
- ISO14001: 2015: Environmental management system
- ISO45001: 2018: Occupational health and safety management system



Key Features



IP68 junction box, connector

IP68 junction box and connector have a high degree of waterproof, effectively resist the harsh environment;



PID Resistant

Excellent PID resistance at 96 hours (85°C/85%) test, and also can be improved to meet higher standards for the particularly harsh environment;



MBB half-cut cell technology

New circuit design, lower internal current, lower Rs loss



Significantly lower the risk of hot spot

Special circuit design with much lower hot spot temperature



Lower LCOE

2% more power generation, lower LCOE

Monocrystalline Solar PV Modules

Electrical Specifications

Module Type	STPM-530W	STPM-535W	STPM-540W	STPM-545W	STPM-550W	STPM-550W
Testing Condition	STC	STC	STC	STC	STC	STC
Rated output (Pmp/Wp)	530	535	540	545	550	555
Rated voltage (Vmp/V)	41.35	41.5	41.65	41.8	41.95	42.1
Rated current (Imp/A)	12.82	12.90	12.97	13.04	13.12	13.19
Open circuit voltage (Voc/V)	49.2	49.35	49.5	49.65	49.8	49.95
Short circuit current (Isc/A)	13.71	13.78	13.85	13.92	13.98	14.04
Module efficiency (%)	20.7%	20.9%	21.1%	21.3%	21.5%	21.7%
Power Tolerance (W)	±5%					

Standard Test Condition (STC):Irradiance 1000W/m² , Cell Temperature 25°C, AM1.5

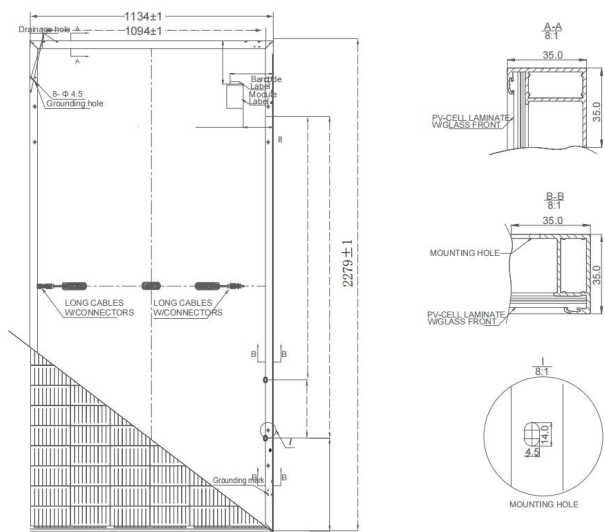
Nominal Module Operating Temperature (NOCT): Irradiance 800W/m², Ambient Temperature 20°C, AM1.5, Wind Speed 1m/s

Mechanical Data

Cell Type	10BB MONO
No. of Cells	144(6x24)
Dimension	2279x1134x35mm
Weight	27kg
Glass	3.2mm, Low Iron Tempered Glass
Frame	Anodized Aluminium Alloy
Junction Box	IP68, 3 diodes
Output Cables	4mm ² , Length 300mm or customized
Connector type	MC4 compatible

Engineering Drawings

Unit: mm



Temperature Characteristics

NOCT Temperature	44°C ±2°C
Temperature Coefficient (Pmax)	-0.36%/°C
Temperature Coefficient (Voc)	-0.28%/°C
Temperature Coefficient (Isc)	0.05%/°C

Maximum Ratings

Maximum system voltage (IEC)	1500VDC
Snow / Wind	5400Pa/2400Pa
Operating Temperature	-40°C ~+85°C
Maximum series fuse rating	25A

Packaging Configurations

Per Pallet	31 pcs
Per 20' GP	155 pcs
Per 40' HQ Container	620 pcs